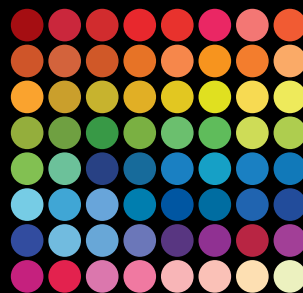
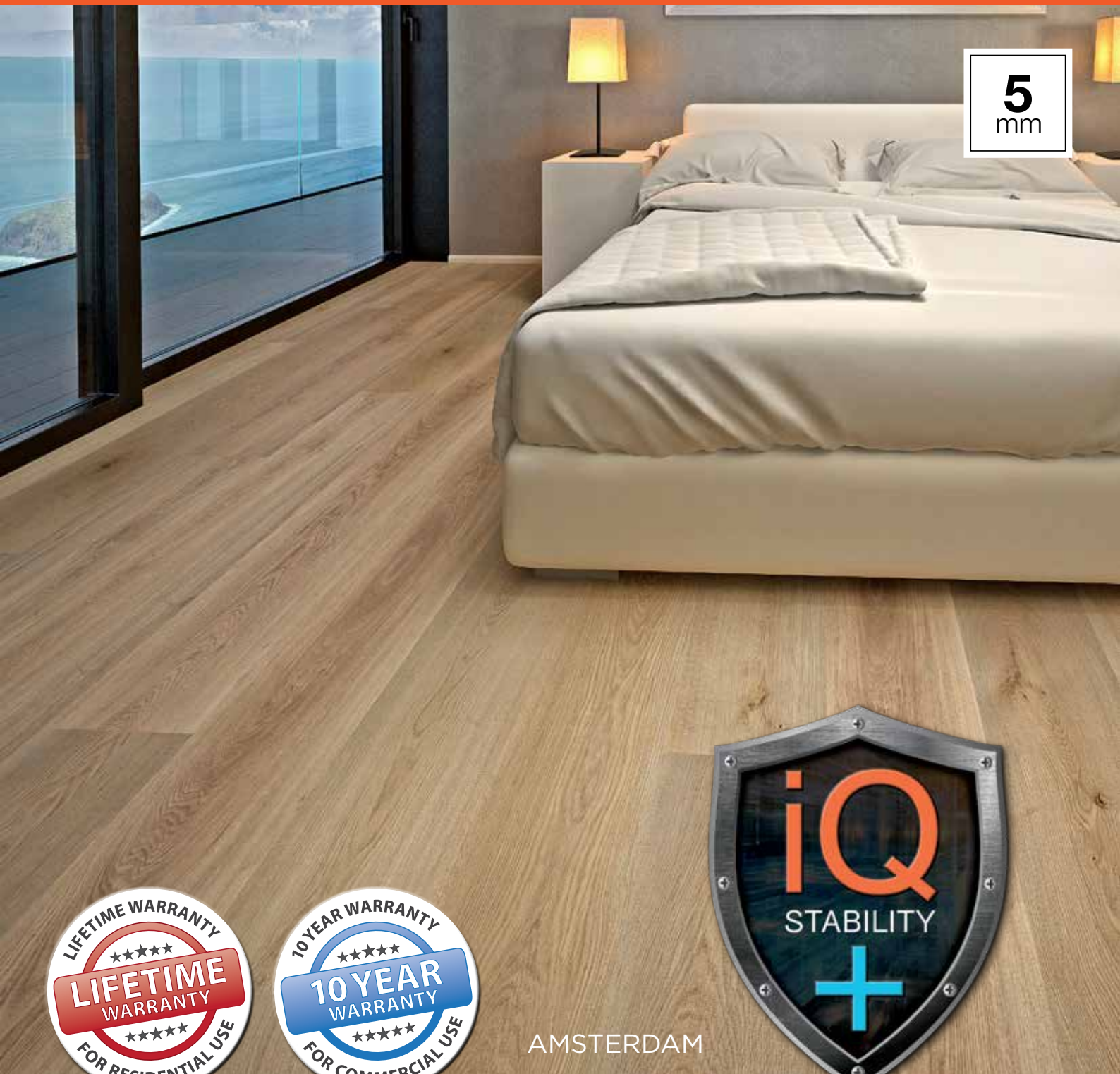


**QLAY 5.0**  
NEXTGEN VINYL FLOORING



## LOOSE LAY VINYL PLANK



**5**  
mm



AMSTERDAM

# ULTIMATE NEXT GENERATION IN HIGH PERFORMANCE FLOORING

## Presenting Proline Floors' Latest and Most Innovative Range of Vinyl Plank Flooring

Discover the Unparalleled Excellence of QLAY 5.0 NextGen Vinyl Flooring. Years of dedicated research and development have culminated to bring you an unparalleled fusion of engineering prowess and exquisite design.

Drawing inspiration from the world's most captivating timber varieties, the QLAY 5.0 collection seamlessly intertwines design and performance. Meticulously curated by our designers, each plank encapsulates a harmonious interplay of colours, textures, and grain variations, enabling you to uncover the perfect flooring that resonates with your personal style.

What truly sets QLAY 5.0 NextGen Loose Lay Vinyl Flooring apart is its endurance, tailored to withstand the rigors of the Australian climate. Our groundbreaking iQ+ core leverages cutting-edge materials, exhibiting remarkable resilience against expansion during scorching summers and steadfastly resisting contraction during the chill of winters.

Scientific testing has unequivocally demonstrated the supremacy of QLAY 5.0 NextGen Vinyl over its counterparts in the loose lay plank market. The outcomes speak volumes—QLAY 5.0 Loose Lay showcases an extraordinary 5-fold increase in dimensional stability compared to the nearest contender in its category.

Not only does QLAY 5.0 Loose Lay exhibit exceptional performance across diverse climates, but it also boasts the infusion of premium Fade resistant inks. These inks surpass the European standard by an impressive 40%, affirming that your flooring will withstand the unforgiving Australian summer, maintaining its vibrant allure for years to come.



GOTHENBURG



0.55mm

0.55mm  
WEAR LAYER



MATT  
FINISH



ACOUSTIC SOUND  
ABSORPTION



HEAT  
RESISTANT



MICRO  
BEVELLED EDGE



PET  
FRIENDLY



WATER  
PROOF



REALISTIC  
WOODGRAIN



DURABLE



STAIN  
RESISTANT



ANTI-SLIP  
CERTIFIED



ECO  
FRIENDLY





MALMO

# UNRIVALED DIMENSIONAL STABILITY: ELEVATING YOUR FLOORING EXPERIENCE

## THE SCIENCE BEHIND OUR QLAY 5.0 PLANK’S IMPRESSIVE PERFORMANCE

In the realm of vinyl flooring, stability is paramount. The ability to seamlessly navigate temperature-induced expansion and contraction is the hallmark of excellence, ensuring your flooring remains impeccable in varying conditions. Without this stability, issues like unsightly gaps, buckling, and compromised aesthetics can arise. Our breakthrough lies in achieving the industry’s highest level of stability, made possible through the integration of cutting-edge fiberglass layers and revolutionary anti-thermal compounds. These advanced elements respond dynamically, contracting under heat and expanding in cooler conditions, ensuring a flooring experience that remains steadfast in the face of environmental fluctuations. We call this IQ Stability +.

### RESULTS

#### DIMENSIONAL STABILITY TEST

This test measures the plank’s ability to keep its original dimensions

- The product is heated to 80 degrees celsius for 6 hours.
- Measurements are taken before and after heating.
- This test shows that QLAY 5.0 NextGEN plank has a dimensional stability rating of 0.02%

This result represents the highest level of dimensional stability available on the market.



#### THERMAL EXPANSION TEST

This test measures the change in length the plank will experience when heated from a cold state. It simulates the effects that real-world temperature changes will have on the plank’s dimensions during a day.

	5 TO 80 C	5 TO 20 C (GAPPING)	20 TO 80 C (COMPRESSION)
QLAY 5.0	0.24mm	0.20mm	0.04mm
Competitor A	0.95mm	0.35mm	0.60mm
Competitor B	1.80mm	1.07mm	0.73mm
Competitor C	5.2mm	1mm	4.2mm

KEY FEATURES	QLAY 5.0 NEXTGEN
100% Waterproof	✓
Sunproof	✓
Suitable for hot and cold climates	✓
Suitable for kitchens and laundries	✓
Impact resistant	✓
Slip resistant	✓
Low VOC	✓
Matching stair nosings	✓
Pet friendly	✓





COPENHAGEN

# CAPTIVATING PATTERN VARIATIONS: REDEFINING FLOORING AESTHETICS

## WHAT IS PATTERN REPEAT?

Vinyl flooring is a type of resilient flooring that comes in large sheets or planks. It is popular due to its durability, ease of maintenance, and the ability to mimic the appearance of other flooring materials like wood, stone, or tile. **When you mention “pattern repeats,” it refers to the repetition of a particular design or pattern within the vinyl flooring.**

When comparing pattern repeats in different vinyl flooring products, you can use square metres (m<sup>2</sup>) as a unit to rate how big the pattern repeat is. The goal is to determine how frequently the pattern repeats over a specific area, as this will impact the overall visual appearance of the floor.

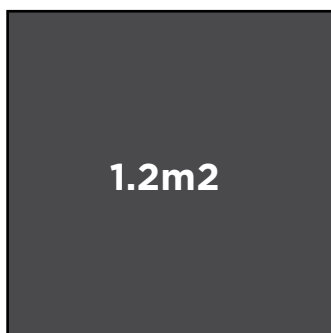
## COMPARE DIFFERENT PRODUCTS

By performing the same calculations for other vinyl flooring products, you can compare how many times the pattern will repeat within the same area. A smaller pattern repeat means the pattern will repeat more frequently, while a larger pattern repeat will result in less repetition and more diverse and natural appearance.

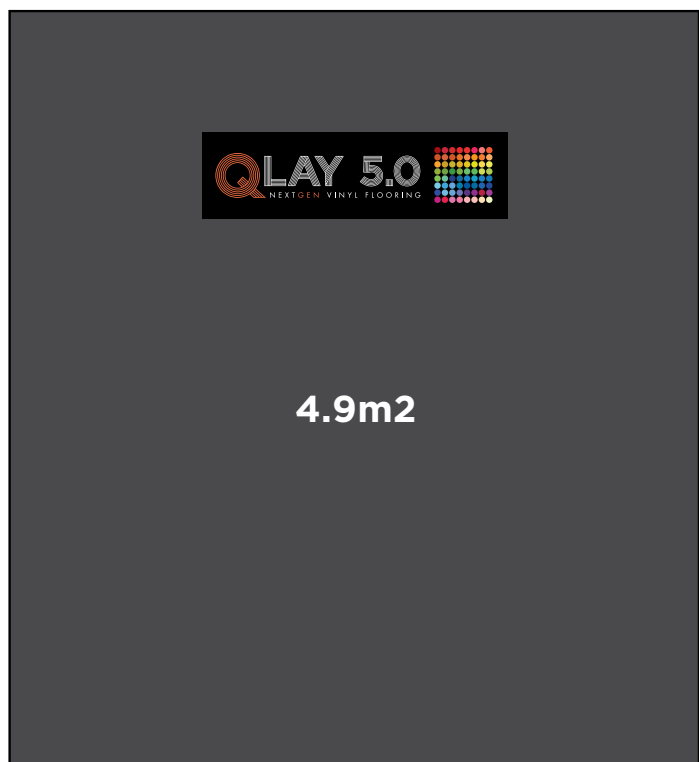
## BEYOND STANDARD: EMBRACING THE QUADRUPLE SIZE FOR NATURE-INSPIRED REALISM

Proline Floors boasts an impressive film size of 4.9 meters—four times larger than the conventional industrial standard. The result is a captivating fusion of patterns and natural colour tones that beautifully mirror the essence of nature. This extensive pattern repeat translates to over 50 different planks in each colour series, offering unmatched diversity and realism in every installation.

### Competitors (Industry Standard)



### Proline Floors QLAY 5.0 (4 x Industry Standard)







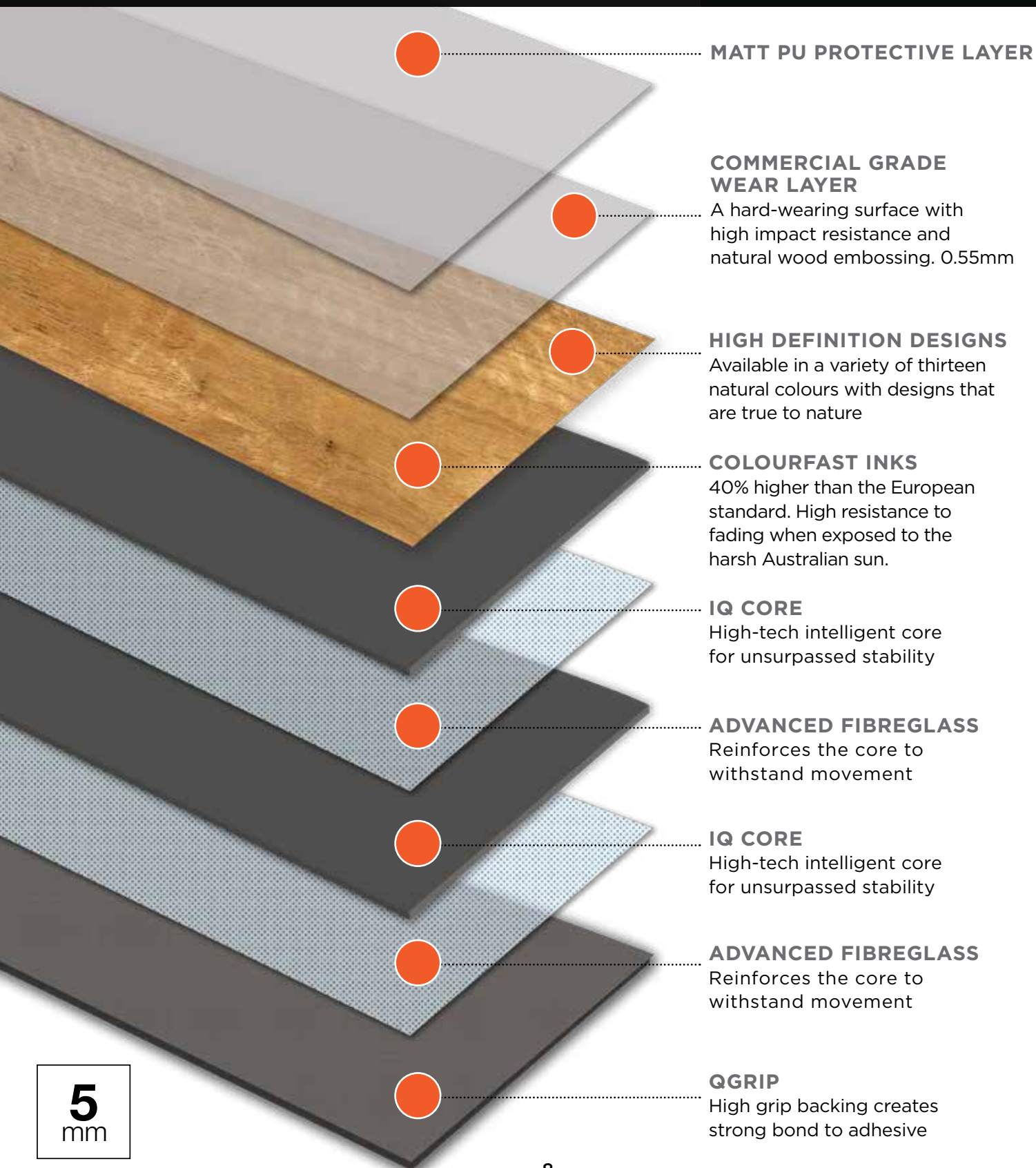
TAMBORINE MOUNTAIN  
SPOTTED GUM





# COMPOSITION

## MULTIPLE LAYERS OF NEXT GENERATION TECHNOLOGY



**MATT PU PROTECTIVE LAYER**

**COMMERCIAL GRADE WEAR LAYER**

A hard-wearing surface with high impact resistance and natural wood embossing. 0.55mm

**HIGH DEFINITION DESIGNS**

Available in a variety of thirteen natural colours with designs that are true to nature

**COLOURFAST INKS**

40% higher than the European standard. High resistance to fading when exposed to the harsh Australian sun.

**IQ CORE**

High-tech intelligent core for unsurpassed stability

**ADVANCED FIBREGLASS**

Reinforces the core to withstand movement

**IQ CORE**

High-tech intelligent core for unsurpassed stability

**ADVANCED FIBREGLASS**

Reinforces the core to withstand movement

**QGRIP**

High grip backing creates strong bond to adhesive

**5**  
mm





### **SMART COMPOSITE CORE**

High-tech intelligent core for unsurpassed stability



### **NEXT GEN TECHNOLOGY**

Utilises cutting-edge material science to enhance performance

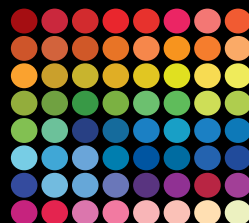


### **ULTRA HEAT RESISTANT**

Designed specifically for Australia's harsh climate



**BENDALONG  
BLACKBUTT**



# MATCHING COLOUR PALETTE STREAMLINED PERFORMANCE

## Proline Floors' latest and most innovative 3mm/0.55mm wear layer vinyl plank flooring

The QLAY 3.0 NextGen Vinyl Wood collection is designed for those who seek high-quality aesthetics with essential performance. Offering the same stunning timber designs as QLAY 5.0, QLAY 3.0 provides a streamlined, cost effective solution without compromising on visual appeal. With a versatile selection of colours and textures, this collection enables you to effortlessly enhance any interior, delivering a sophisticated and natural wood-like finish.

### Commercial:

QLAY 3.0 NextGen Vinyl is ideal for both residential and commercial applications where reliable performance and easy installation are key. This 3mm thick dry back vinyl plank requires standard Vinyl adhesives, making it a straight forward choice for projects demanding a durable, attractive floor covering that aligns with modern design standards. Applications include residential living areas, retail spaces, offices, and hospitality environments.

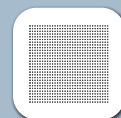
### Features:

- 3mm thickness for a streamlined, cost-effective option without sacrificing aesthetic quality.
- Harmonised colour and grain palette to QLAY 5.0, offering cohesive design possibilities across spaces.
- Extensive pattern repeat with 50 different planks per colour series, ensuring a natural and varied appearance in any installation.
- Durable construction suitable for light commercial and residential use, providing long-lasting performance.



0.55mm

0.55mm  
WEAR LAYER



MATT  
FINISH



ACOUSTIC SOUND  
ABSORPTION



HEAT  
RESISTANT



MICRO  
BEVELLED EDGE



PET  
FRIENDLY



WATER  
PROOF



REALISTIC  
WOODGRAIN



DURABLE



STAIN  
RESISTANT



ANTI-SLIP  
CERTIFIED



ECO  
FRIENDLY



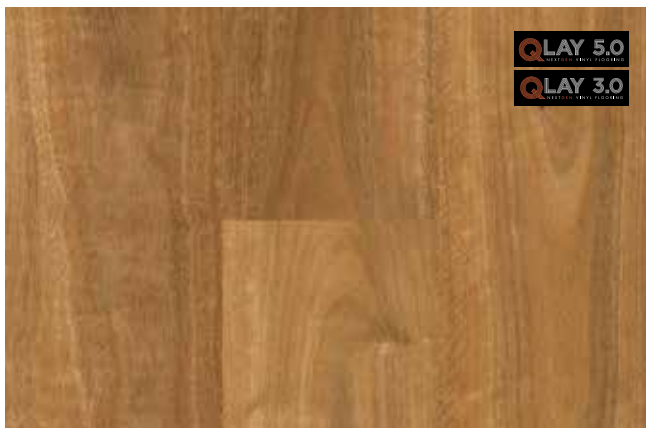


AMSTERDAM

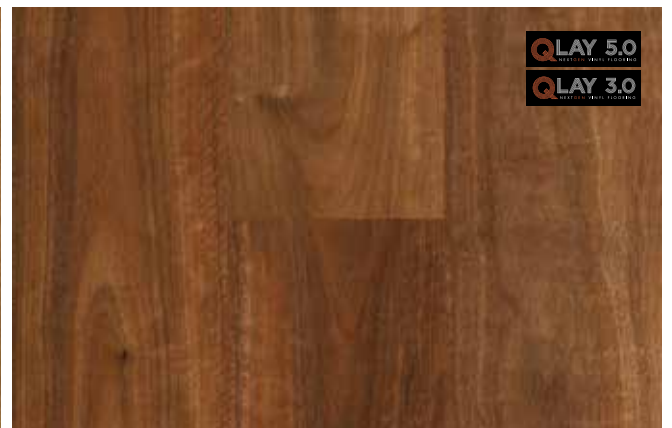


# SPECIFICATIONS

	QLAY 5.0	QLAY 3.0
PLANK SIZE	1500mm X 230mm	1530mm X 235mm
THICKNESS	5mm	3mm
WEAR LAYER	0.55mm	0.55mm
SURFACE	Matte Embossed	Matte Embossed
IQ STABILITY +	YES	NO
SLIP RESISTANCE	P3	P3
PIECES PER CARTON	8	8
AREA PER CARTON	2.76m2	2.88m2
DOMESTIC WARRANTY	Lifetime	Lifetime
COMMERCIAL WARRANTY	10 Years	10 Years



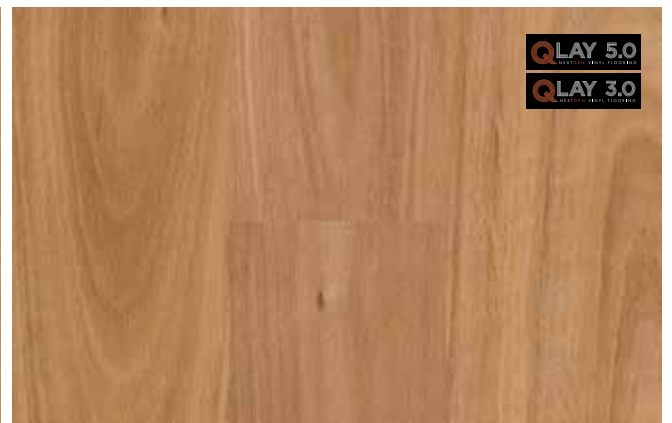
NORTHERN RIVERS SPOTTED GUM



TAMBORINE MOUNTAIN SPOTTED GUM



BENDALONG BLACKBUTT



HINTERLAND BLACKBUTT





AMSTERDAM



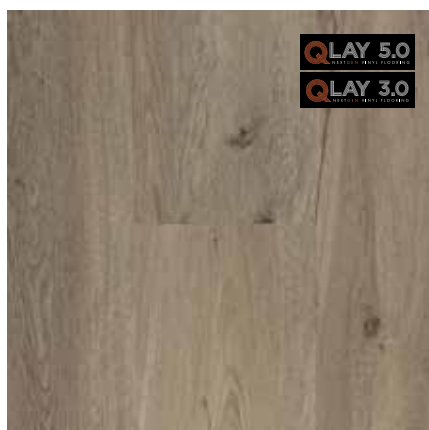
BERGEN



COPENHAGEN



GOTHENBURG



HELSINKI



LUCERNE



MALMO



OSLO



STOCKHOLM

## FREE SAMPLE REQUEST

**Scan the QR Code to Order 3 X FREE Samples from the QLAY 5.0 Vinyl Range.**

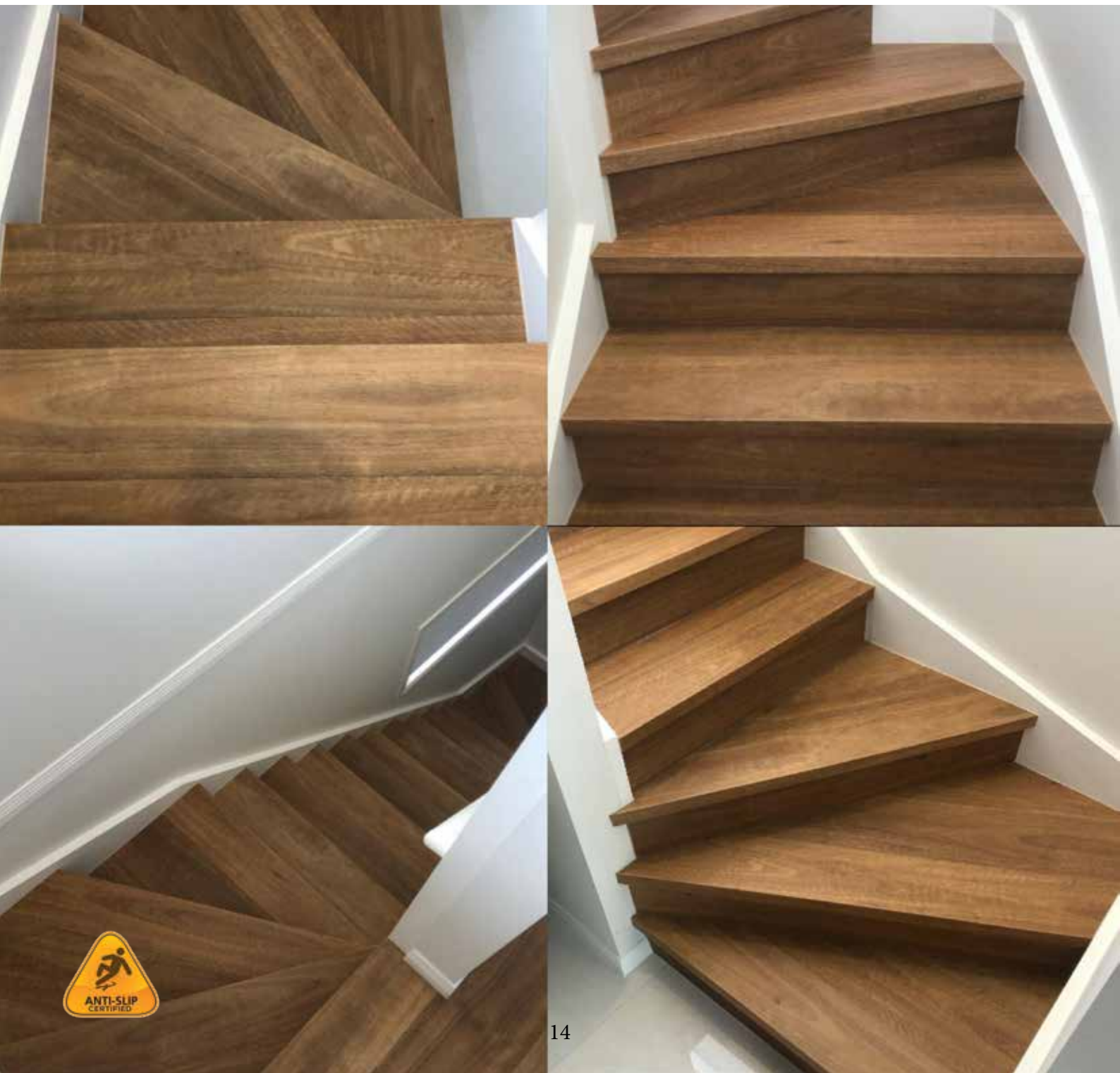
- Step 1:** Scan the QR code with your phone.
- Step 2:** Select your preferred colour.
- Step 3:** Click on the Order FREE Sample button. This will add the colour to your cart ready for checkout.
- Step 4:** You can order up to three free colours. Find your preferred colour and repeat process.



# Custom Made Stair Nosing

## Perfect Match, Seamless Transition

Elevate your home's design with our custom-made stair nosings, crafted to perfectly match the colour, embossing, and gloss level of your chosen flooring. Using the same vinyl planks as your flooring, our CNC machine precisely shapes these stair nosings, ensuring a seamless transition from floor to staircase. This creates a stunning, cohesive look throughout your space. With fast turnaround and delivery alongside your flooring order, you can achieve a flawless finish on every level of your home, effortlessly.







NORTHERN RIVERS  
SPOTTED GUM





## MATCHING SCOTIA



HINTERLAND BLACKBUTT



Proudly imported and distributed  
by Proline Floors. For your nearest  
stockist phone (02) 9525 5241 or  
visit [prolinefloors.com.au](http://prolinefloors.com.au)

Your local supplier: