

# Evolution

BY PROLINE FLOORS

## INSTALLATION INSTRUCTIONS

### BEFORE YOU BEGIN

Do not install this product until all wet trades have been finished. The floor should be the last item to be installed before construction has finished.

#### Acclimatise the product

Please leave product on site for at least 3 days to allow it to acclimatise itself to the atmospheric conditions of your home and surrounding area.

#### Make sure subfloor is level

A great installation comes from having a flat subfloor. Check the subfloor with a long straight edge and fill low lying areas with self leveling ardit. The subfloor should not be more than 3mm out of straightness over 3 metres.

#### All installations must use approved underlay with Moisture Barrier attached.

Roll out your approved Proline Floors underlay, making sure the overlap moisture barrier flap is visible. Cut the roll with a knife and start to roll out next row making sure this row is on top of the preceding rows moisture barrier flap. Tape the joint with duct tape on every row.

#### Expansion Gap

An Expansion Gap of 10mm must be left around the whole perimeter of the installation. This is to allow the floor to expand and contract during different seasons. The installation, if large, should be compartmentalised into individual rooms that are separated with an expansion joint accessory. Rooms greater than 6m x 6m should have expansion joints installed. If this is not practical, a larger expansion gap of 2mm for every metre of flooring installed in each direction should be left, (e.g. 8 x 10m room would require 8 x 2mm = 16mm gap at each end of the 8m section and 10 x 2mm = 20mm gap at each end of the 10m section). To achieve this extra gap undercut the gyprock around the perimeter of the room, and use thick skirtings and or scotia to cover this expansion gap.



**IMPORTANT:** For reasons both for visual enjoyment and for structural integrity of the total installation, do not install end joints closer than 600mm from the end joints of the previous row. All planks at the start of each row should be no shorter than 400mm.

### INSTALLATION

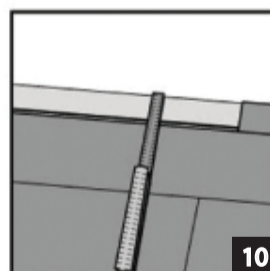
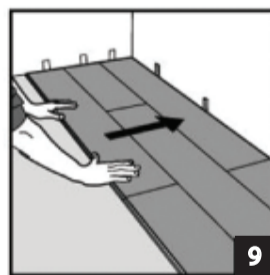
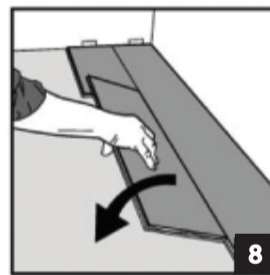
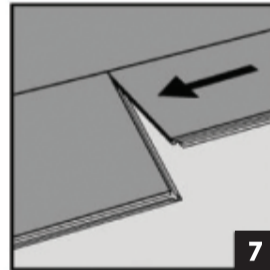
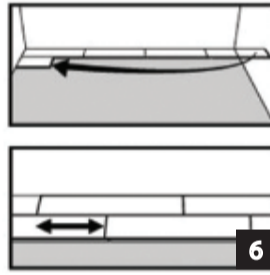
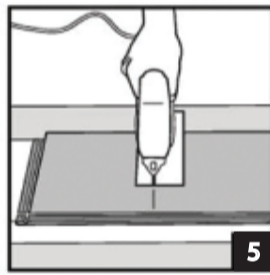
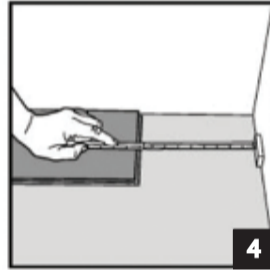
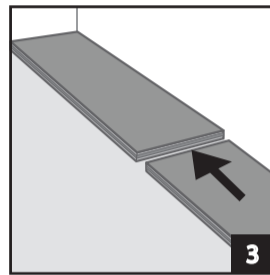
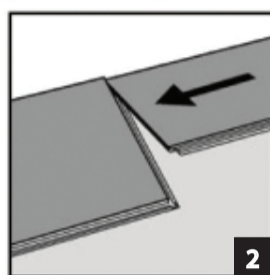
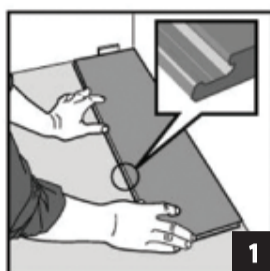
- First plank, first row. Place a 10mm wedge to the left of the plank against the wall. Place 10mm wedges every 500mm along the length of the first row. These will keep your expansion joint spacing correct and should be removed at the end of the job. [Diagram 1]
- Second plank, first row. Place this plank tight to the short end of the first one. [Diagram 2]
- Push the 2nd planks short end until it engages with the click on the short end of plank 1. [Diagram 3]
- At the end of the first row, leave an expansion gap of 10mm to the wall and measure the length of the last plank to fit. [Diagram 4]
- If cutting with a jig saw, the laminate surface should be turned down. If cutting with a hand saw, the laminate surface should be face up. [Diagram 5]
- Second row, First plank minimum length of 500mm. Leave an expansion gap of 10mm against the wall. Generally, the minimum distance between short ends of planks in parallel rows shall not be less than 300mm. [Diagram 6]
- Install the second plank of the second row. [Diagram 7]
- Place the panel tight to the short end of the previous panel and fold down in a single action movement. [Diagram 8]
- After 2-3 rows, reposition the floor to adjust the distance to the front wall to ensure an expansion gap of 10mm. [Diagram 9]
- Last row (and perhaps also first row). Minimum width must be at least 50mm. Remember to leave an expansion



**TIP:** After cutting the final row attach your skirtings/beadings to complete the job.

### MAINTENANCE AND CLEANING

- Clean the floor regularly with a vacuum cleaner or dry Evolution microfibre mop.
- To remove stubborn mess, use Evolution dedicated laminate floor cleaner.
- Avoid liquid spillages. Spillages of water or other liquids should be wiped off immediately. Water damage is not covered under warranty.
- To protect the floor from sand we recommend you use doormats at entryways (but do not use mats with a rubber backing).
- Place floor protectors under all furniture legs to avoid scratches.
- Place mats under all chairs with caster wheels.
- DO NOT use steam mops on this floor.
- Pet urine will damage the floor. Liquid damage is not covered under warranty.



Please contact us if you have any questions.

Customer Service: 02 9525 5241

Installers are strongly advised to inspect the products for defects before installation. If the defective flooring panels are installed, the supplier will assume no further responsibility.



Proline  
floors